

WHY CHOOSE MELRO?

- ✓ Capture and use your free roof water
- ✓ Maximum water holding strength
- ✓ WaterMark Certification and Testing
- ✓ AS/NZS 4766 Certification and Testing
- ✓ ISO 9001 Quality Certified System
- ✓ Colour palette for Australian landscapes
- ✓ Range with the right sizes and shapes
- ✓ Quality manufacturing and scheduling system
- ✓ 10 year guarantee
- ✓ Designed, manufactured and supported in Victoria
- ✓ Supplied with everything you need to hold water
- ✓ Configurations suit most applications
- ✓ Custom options available
- ✓ Potable water approved
- ✓ Food grade materials
- ✓ UV stable, long lasting outdoor life



Made in Australia

ROUND WATER TANKS

Round tanks offer the best value for money in water storage in a wide variety of sizes. Multiple tanks are easily connected together to increase storage capacity; please see melro.com.au/connect-multiple-tanks for guidance. Tanks up to 8000 litres are supplied with a 25mm ball valve and multiple plugged outlets to suit most applications. Larger tanks are supplied with quality brass gate valves.



Litres	Diameter	Total height	Inlet height
500	825mm	1166mm	1166mm
650	700mm	1850mm	1850mm
800	800mm	1775mm	1775mm
1000	825mm	2080mm	2080mm
1005	890mm	1920mm	1920mm
1600	1100mm	1893mm	1893mm
2100	1250mm	1850mm	1830mm
2500	1250mm	2195mm	2175mm
3500	1525mm	2100mm	2075mm
4020	1660mm	2120mm	2100mm
5500	2000mm	2050mm	2000mm
8000	2250mm	2320mm	2255mm
10100	2400mm	2530mm	2405mm
16500	3100mm	2500mm	2416mm
24000	3500mm	3000mm	2670mm
35000	4100mm	3050mm	2775mm

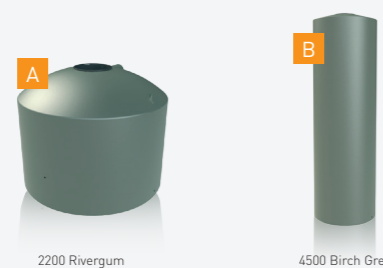


ROUND SQUAT & TALL

Squat tanks allow easy access to the inlet strainer. Their reduced height means they can receive rainwater from a low roof. They are also an ideal choice as a header tank; their wide footprint enhances stability when elevated.

Tall tanks provide a substantial head pressure boost before external pumps are required, and they achieve this within a remarkably small footprint. This tank is often used in industrial storage applications, and is available with a cone end.

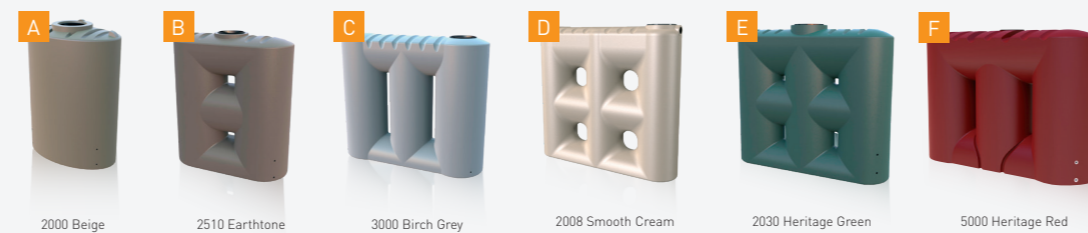
Type	Litres	Style	Diameter	Total height	Inlet height
Squat	2200	A	1600mm	1283mm	1283mm
Tall	4500	B	1250mm	4005mm	4005mm



SLIMLINE WATER TANKS

Slimline tanks suit limited space applications, and are a great option for people seeking an alternative look. All slimline tanks are supplied with a 25mm ball valve and multiple plugged outlets to suit left or right hand installation and can be easily connected together to increase storage capacity; please see melro.com.au/connect-multiple-tanks for guidance.

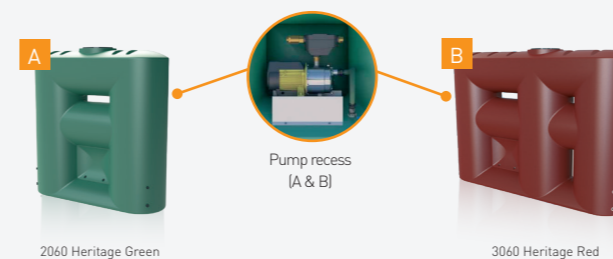
Litres	Style	Depth	Width	Height
1510	B	620mm	1545mm	2150mm
2000	A	895mm	1500mm	2080mm
2008	D	550mm	2400mm	2150mm
2020	D	640mm	2170mm	2000mm
2030	E	600mm	2300mm	2010mm
2510	B	800mm	1900mm	2150mm
3000	C	800mm	2500mm	2150mm
3100	E	775mm	2500mm	2135mm
3510	B	890mm	2330mm	2150mm
4000	E	900mm	2750mm	2150mm
5000	F	1020mm	3100mm	2175mm



SLIMLINE TANKS WITH INTEGRATED PUMP RECESS

Slimlines with pump recesses are the ideal choice for builders and plumbers for fast installation and a clean look. Usually supplied with a choice of factory fitted quality domestic pumps featuring automatic mains water backup. These tanks can be supplied as is without a pump if intended as a secondary storage tank, or when choosing to mount your own pump.

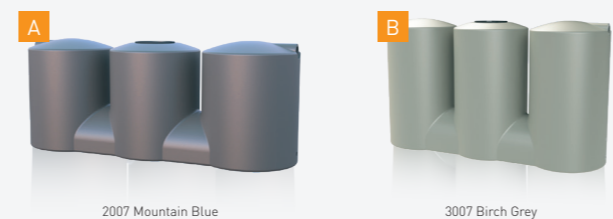
Litres	Style	Depth	Width	Height
2060	A	700mm	2000mm	2050mm
3060	B	700mm	2900mm	2040mm



SLIMLINE SQUAT

Squat slimlines are often chosen when an uninterrupted view from an external window is required. They allow easy access to the inlet strainer, and can receive rainwater from a low roof. These tanks are also useful where there is restricted access to the required tank location.

Litres	Style	Depth	Width	Height
2007	A	912mm	2895mm	1150mm
3007	B	912mm	2895mm	1650mm



CARTAGE TANK

Type	Cartage tank
Litres	2000
Length	1970mm
Width	1530mm
Height	955mm

Suitable for vehicle transportation of drinking water. Load stability can be increased with an optional baffle system.

UNDER DECK TANKS

Suits under deck spaces and low areas.

Under deck tanks Tank dimensions optimised for typical under deck installations.



Slimline under deck kit Factory modification for horizontal slimline installation.



Litres	Ref.	Length	Width	Height
1000	A	1600mm	1200mm	630mm
2000	A	2750mm	1200mm	720mm
2008	B	2150mm	2400mm	550mm
2020	B	2000mm	2170mm	640mm
2030	B	2010mm	2300mm	600mm
2510	B	2150mm	1900mm	800mm
3000	B	2150mm	2500mm	800mm
3100	B	2135mm	2500mm	775mm
4000	B	2150mm	2750mm	900mm
5000	B	2175mm	3100mm	1020mm

COLOUR SELECTION

Melro tanks are available in a wide palette of colours. See melro.com.au/water-tank-colours for Colorbond® name equivalents and extra colours available upon request.

Colours in this brochure are indications only. The printing process cannot accurately reproduce true product colour.

Smooth Cream	Merino	Wheat	Birch Grey
Beige	Earthtone	Jasper	Metal Grey
Slate Grey	Monument	Black	Mountain Blue
Heritage Red	Mist Green	Rivergum	Heritage Green

ACCESSORY RANGE

See melro.com.au/water-tank-accessories for common accessories delivered with Melro water tanks. Two year manufacturer warranty applies.



Mains top up kit

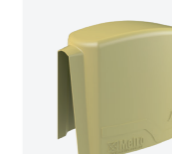
Automatic mains water valve for continuous water supply to toilets and laundry if tank empties.

Standard	400mm
Small round tanks up to 2500L	300mm
24000L & larger	500mm

Water pumps



	Brand	Features
Garden Pump	Quality standard pump	Pressure control
House Pumps	Quality standard pump	Single Storey
With mains water backup to supply toilets and laundries	Davey KRBX1	Double Storey
	Davey KRB1	Basic single storey
	Davey KRB2	Single Storey
		Double Storey



Smooth Cream

Pump cover

Available in all standard tank colours.

Length	610mm
Width	350mm
Height	480mm



Fire hose VIC CFA adaptor kit

An additional factory installed outlet, plus a gate valve and VIC CFA adaptor. The standard tank outlet is usually moved to a higher position to reserve firefighting water for this second outlet.



Hose connection kit

600mm or 1500mm length of food grade suction hose with 25mm male threaded hose tails.

FIVE STEPS TO INSTALLING YOUR WATER TANK

1

Your water needs

Establish your required water usage for the garden, pool, spa etc. Determine the rainfall in your area, your catchment (roof) size and available space to place your tank. Please see melro.com.au/water-tank-capacity for further guidance. It is best to be generous when estimating your water requirements.

2

Choose your tank

Melro recommends you choose the largest tanks to suit your site. In narrow spaces, slim tanks can be linked end to end to achieve your storage capacity; please see melro.com.au/connect-multiple-tanks for guidance. Please ask your reseller for tank fitting location options.

3

Site preparation

Before you order, please double check pathway dimensions to confirm that your tanks can be moved into position. If you are having them delivered, check you have sufficient clearance for the truck which can be up to 19m in length, 3m wide and 4.5m tall. Measure clearance under trees, through gates and doors just to be sure. Tanks require a level, stable base capable of supporting the weight of the tank when full.

4

Delivery

Please advise when ordering if you have access restrictions. Drivers can generally place tanks next to the truck only. Delivery vehicles may only enter your property provided it is safe to do so, clear access is provided, there is no risk of damaging the vehicle, the tank or your property, and it can be done within a reasonable time frame (10 minutes). Otherwise, tanks will be left at the nearest practical location at our driver's discretion. Customers must arrange further assistance if tanks need to be positioned onsite.

5

Installation

Melro recommends use of a qualified tradesperson to carry out installation work, according to the regulations applicable in your local area. Customers must ensure all plugs and tank connections are sealed correctly. Detailed installation instructions are supplied with your tank and are also available at melro.com.au/water-tank-installation.

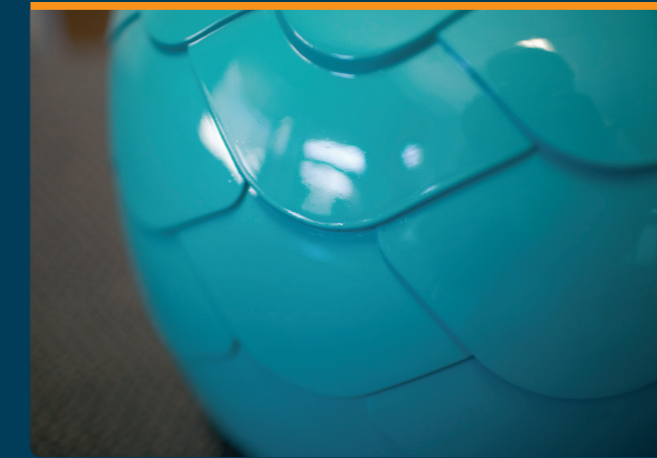
MELRO DELIVERY AREA INCLUDES MELBOURNE METRO, GEELONG AND MOST MAJOR REGIONAL CENTRES IN VICTORIA. PLEASE REFER TO THE DELIVERY MAP ON THE NEXT PAGE. 24000 AND 35000 LITRE TANKS ARE OVERSIZE LOADS AND MAY REQUIRE ADDITIONAL ROAD PERMIT FEES IN RESTRICTED AREAS. FOR MORE DETAILS PLEASE SEE MELRO.COM.AU/TANK-DELIVERIES

ROTOMOULDING SERVICES



STORAGE VESSELS

- Stormwater Retention & Detention Tanks
- Industrial Tanks & Cone Tanks
- Chemical, Fertiliser & Molasses Tanks
- Plastic Fabrication
- Rotolining



DESIGN AND CONTRACT MOULDING

- Furniture
- Planters
- Vehicles
- Noise Wall Panels
- Your Design

Contact our team on 03 5940 4334 for more information about custom moulding or visit melro.com.au/custom-moulding.



Melro Water Tank Range

Made in Australia



STANDARD TANK FIT OUT

Slimline Tanks

INSTALLED: INLET STRAINER, OUTLETS (FEMALE) & OVERFLOW
SUPPLIED: BALL VALVE, OUTLET PLUGS, OVERFLOW STRAINER

1510, 2008, 2020, 3000 & 3510 Tanks
CAN INSTALL REVERSED WITH STRAINER TO THE LEFT



2007 & 3007 Tanks



All other Slimlines

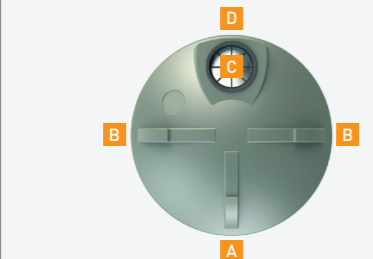


Overflow pipe can run left or right

Round Tanks

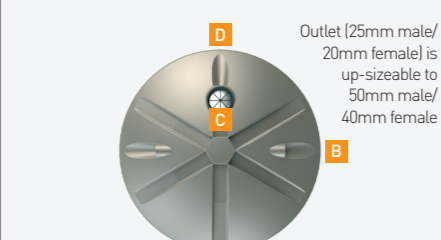
INSTALLED: INLET STRAINER, OUTLETS (FEMALE) & OVERFLOW
SUPPLIED: BALL VALVE, OUTLET PLUGS, OVERFLOW STRAINER

Small Round Tanks up to 8000 litres



4500 Tall, and Large Tanks 10100 litres and above

INSTALLED: INLET STRAINER, BRASS OUTLET (MALE/FEMALE), OVERFLOW
SUPPLIED: GATE VALVE AND OVERFLOW STRAINER



Outlet (25mm male/ 20mm female) is up-sizeable to 50mm male/ 40mm female

Underdeck Tanks

NOTE: UNDERDECK TANKS HAVE NO INLET STRAINER.
MELRO RECOMMENDS INSTALLATION OF A FILTRATION DEVICE AT AN ACCESSIBLE POINT ON THE INCOMING DOWNPIPE

2000 litre Underdeck Tank



Slimline underdeck conversion



A 20mm bucket tap outlet, 360mm from ground B 25mm outlet C Inlet D 90mm overflow

Custom Fitout

For custom fitout, visit melro.com.au/water-tank-range and click on your tank's CUSTOM button to download its order form. Simply print, fill in your details and hand to your reseller to order.

DELIVERY

Tank delivery

Please check with your store's irrigation expert for delivery. Additional charges may apply for deliveries outside the shaded area. Tanks 24000 litres and above are oversized loads and may require VicRoads permits and pilot vehicle(s) at an additional charge depending on your location.

Scheduling

We will do our best to deliver to your timetable, but for speediest delivery being flexible helps. Please advise when ordering if you have access restrictions or special requests.

Vehicles on site

Melbourne Rotomould delivery vehicles are up to 19 metres in length, 3.5m wide and 4.5m tall. Our vehicles may only enter your property provided:

- it is safe to do so
- clear access is provided for the vehicle (suitable pathway, adequate clearance each side and clearance above – this includes tree branches)
- there is no risk of damaging the vehicle, the tank or your property (for example, we will not move tanks over a sealed driveway)
- it can be done within a reasonable time frame (10 minutes)

Otherwise, tanks will be left at the nearest practical location at our driver's discretion.

Tanks on site

Our drivers can generally place tanks next to the truck only. If tanks need to be positioned onsite, customers must arrange further assistance. The points listed above in 'Vehicles on site' also apply when moving tanks. Round tanks 10100 litres and above and slimline tanks 4000 litres and above are extremely heavy; customers must arrange at least two able bodied people to assist the driver with unloading.



YOUR LOCAL DEALER IS:



Melbourne Rotomould | melro.com.au